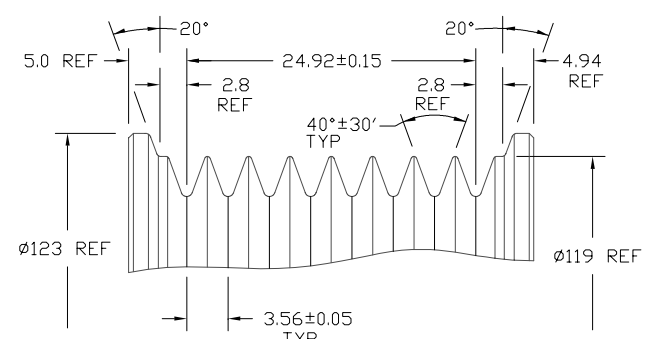
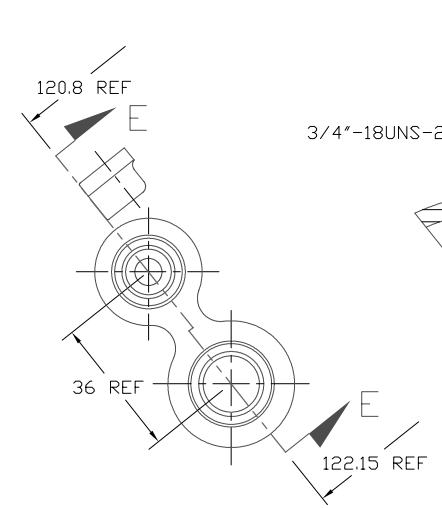


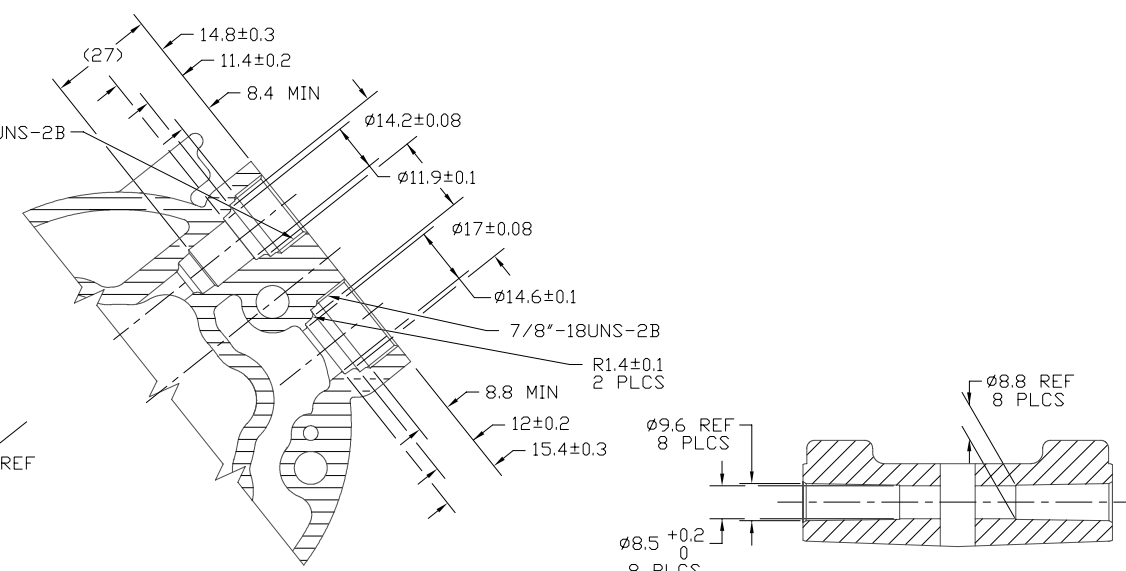
PDCN	REV.	APPV	DATE	REVISIONS	DWN	DSGN	CHK	APPV
2006310	A		12/11/06	INITIAL ISSUE				
				PRV: 4307-6470 WAS 4967-6470 224 MAX WAS 223 MAX	RSR	JW	DRL	TK



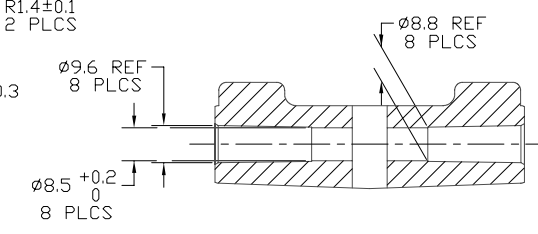
DETAIL C  
SCALE: 3:1



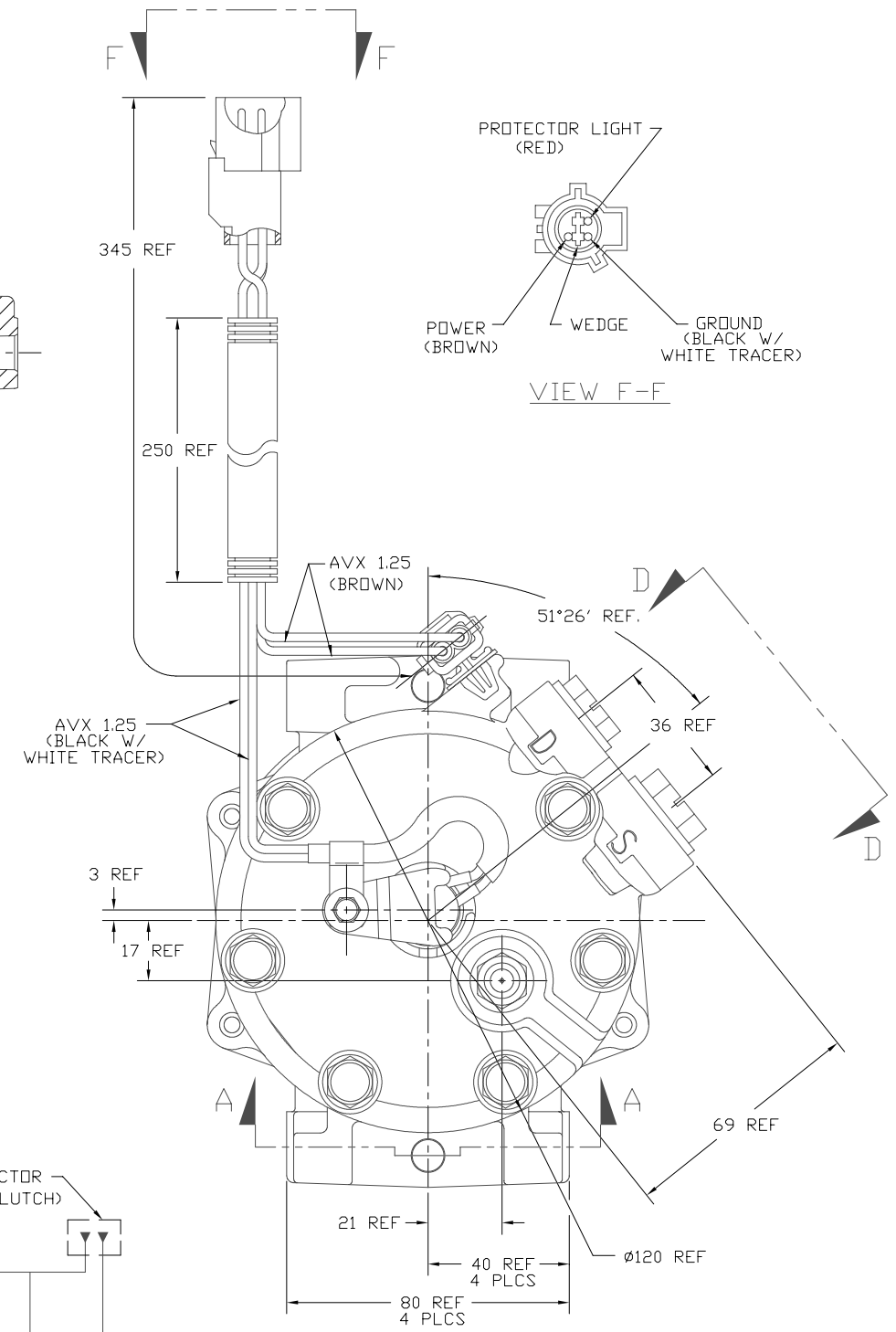
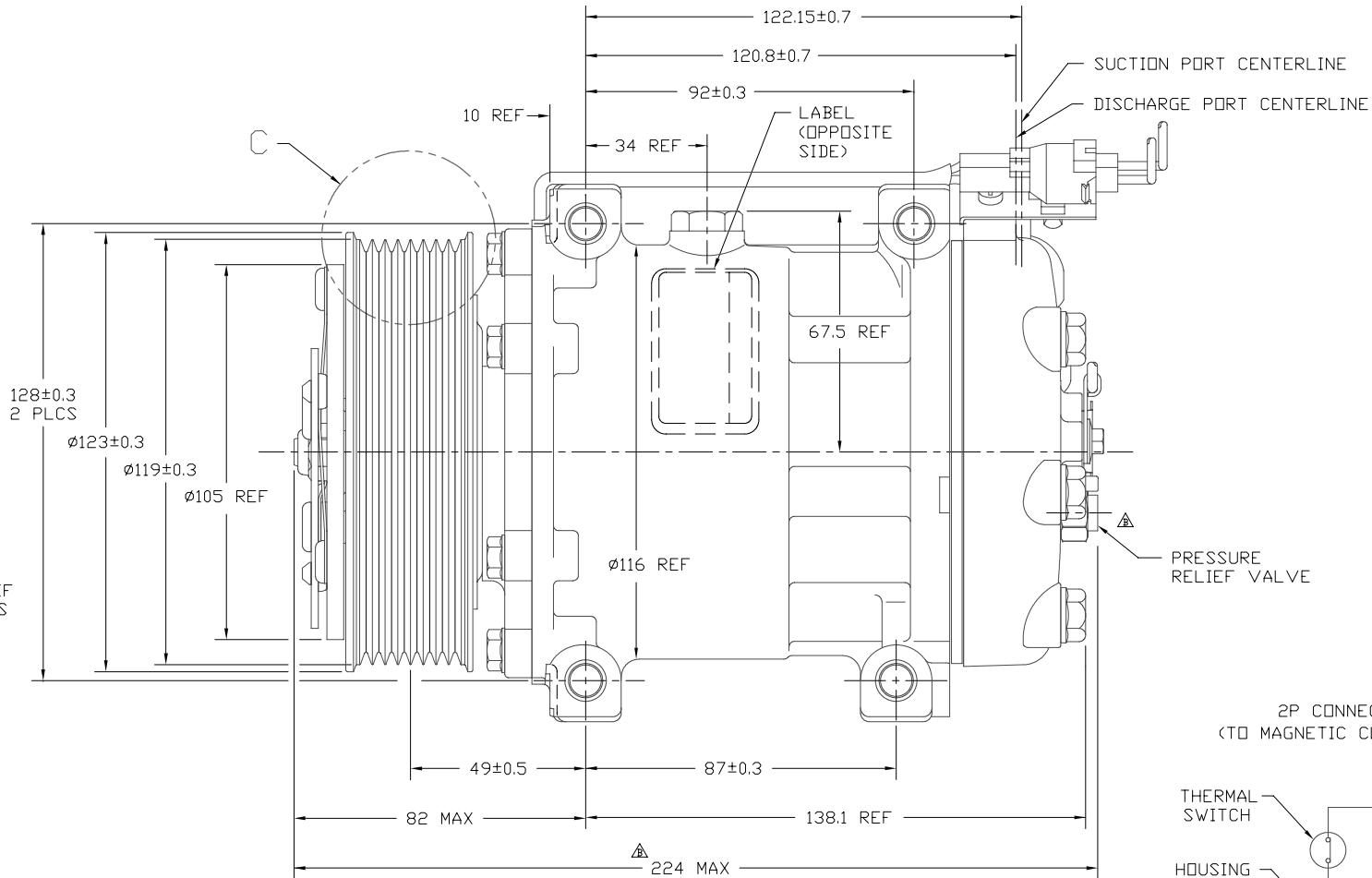
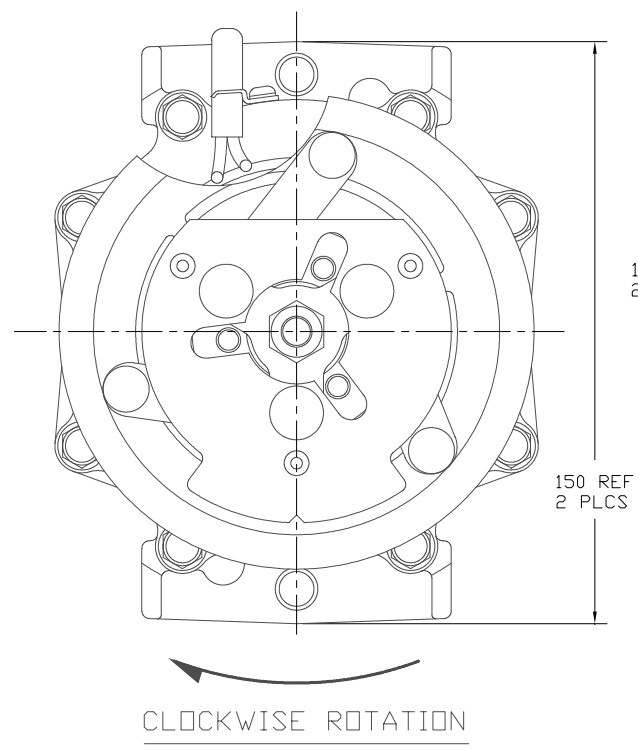
VIEW D-D  
(VIEW SHOWN WITH SEAL CAPS  
PLATE AND CONNECTOR REMOVED)



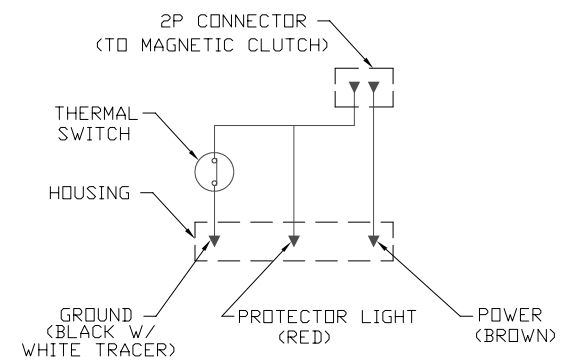
SECTION E-E



SECTION A-A



VIEW F-F



CIRCUIT DIAGRAM

COMPRESSOR SPECIFICATIONS (REF)

DISPLACEMENT PER REVOLUTION	154.9 cc / rev. ( 9.5cu.in. / rev. )
MAXIMUM ALLOWABLE R.P.M.	6000 R.P.M.
MAXIMUM ALLOWABLE CONTINUOUS R.P.M.	4000 R.P.M.
REFRIGERANT	R134a
OIL ( SP-15 )	300 cc ( 10.1 fl.oz. )

CLUTCH SPECIFICATIONS (REF)

RATED VOLTAGE	DC 12V
BREAKAWAY TORQUE	3.5 kgf-m min. @ 12V
MINIMUM ENGAGEMENT VOLTAGE	7.5V @ AIR GAP 0.6mm
POWER CONSUMPTION	49 watts max.
BELT TYPE	PV8 TYPE
MAXIMUM ALLOWABLE BELT TENSION	120 kgf
PULLEY DIAMETER	Ø119mm (4.68 in.)
CLUTCH TYPE	HEAVY DUTY

DO NOT SCALE

REV. LEVEL	RELEASED FOR:	DESIGN DEVELOPMENT	SCALE REF	PLOTTED SCALE REF	UNIT
A	M. Harrington	HF	1:1	NONE	METRIC
CHK	R. Rodriguez				
APPV.	Dennis Lee				
APPV. DATE	NB JC				
APPV. DATE	04/12/04				
RELEASED FOR:	M. Harrington				
DESIGN VALIDATION	NB JC				
APPV. DATE	04/13/04				
RELEASED FOR:	M. Harrington				
PRODUCTION VAL'D.	NB JC				
APPV. DATE	04/13/04				
RELEASED FOR:	M. Harrington				
PRODUCTION	NB JC				
APPV. DATE	04/13/04				

**SANDEN**  
SANDEN INTERNATIONAL (U.S.A.), INC.

INTERPRETATION OF THIS DRAWING PER  
ASME Y14.5M-1994

THIRD ANGLE PROJECTION

MATERIAL: -

NAME: COMPRESSOR

DWG. NO. 4474-6000

REV. B