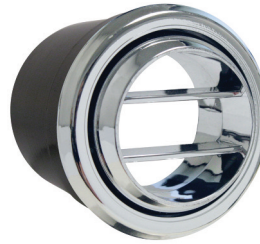


LOUVERS

Standard Series Louvers



49054-VUL Underdash For 2.5" hose.
49354-VUL Underdash (All black)
49154-VUL Underdash (All chrome)
49051-VUI Underdash louver pod only (Fits all 2.875" Louvers)



490535 Double vane louver chrome. For 2.5" hose.



490500 Through Kick Panel Louver Pod. Louver mounts through the backside of kick panel. Includes 49053-VUL Louver and installation template. (Sold individually)



499195 SlimLine Adjustable Double Vane Louver. Thru-dash mount. 3" diameter (requires 2 5/8" Hole size) Note: Louver Open, Close & Rotate 360°



499194 Adjustable Double Vane Louver. Chrome bezel thru-dash mount. 2.706" diameter.
499193 Adjustable Double Vane Louver. Black bezel thru-dash mount. 2.706" diameter. Note: Louver Open, Close & Rotate 360°



49053-VUL Thru-dash mount. 2.875" Dia. For 2.5" hose.
49353-VUL Thru-dash mount (All black)
49153-VUL Thru-dash mount (All chrome)
49049-VUL Thru-dash mount. For 3" hose.



Professional Quality Roto Broach Hole Saw

421002 The right way to cut louver mounting holes in metals, plastics, or wood trim. Includes pilot and arbor. 2.625 Diameter - 3/8" Drill shank size.

TOTALLY COOLED GALLERY

The Goodguys '32 Tribute, 2014 Grand Prize Give-A-Way car was built by Kindig It Designs. This car was built to look like Goodguys founder, Gary Meador's original '32 sedan which traveled many miles to early events. The new version features a complete Gen II Universal a/c system and a small block Chevy Front Runner engine drive system.

